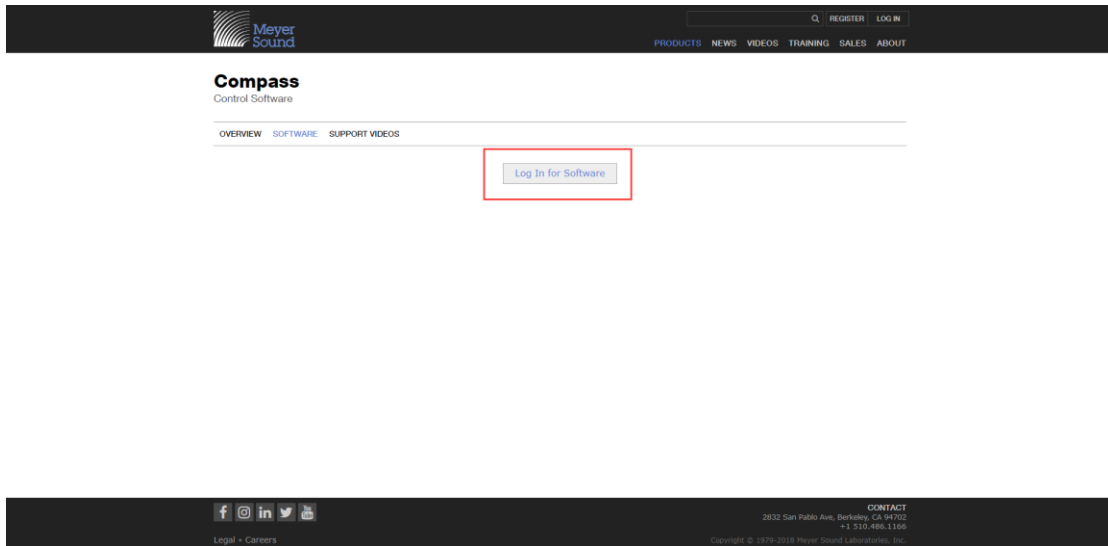


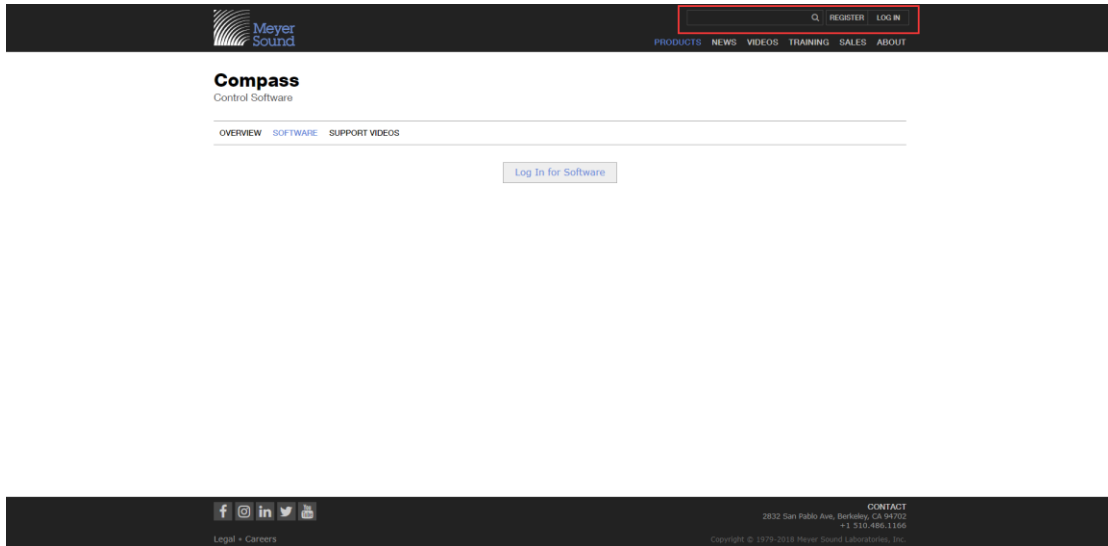
Bob McCarthy 培训所使用的软件安装指导

1. 下载 Compass 软件，连接 <https://meyersound.com/product/compass/#software>

A. 如果您之前注册过账号，请直接登录进入下载页面。



B. 如果您没有账号，请在右上角使用邮箱注册账号



注册信息填写完成后，邮箱会收到确认邮件，进行注册确认，然后使用账号登录。

C. 登录之后根据计算机自身系统使用进行下载（MAC / Windows），并安装。

Meyer Sound

COMPASS
Control Software

OVERVIEW SOFTWARE SUPPORT VIDEOS

Compass 4.3.1 for GALAXY, RMServer, and CAL

Released March 26, 2018
For OS X 10.12 (Sierra) and OS 10.13 (High Sierra) – Windows 8.1 Professional and Windows 10 Professional
Firmware files for GALAXY, RMServer, and CAL are included with the Compass 4 software.
After installing the software, firmware files can be found within the Compass 4 application folder on your computer.

Compass 4.3.1 Mac OS X 198.49 MB
Compass 4.3.1 Windows 122.09 MB
Compass 4.3.1 Release Notes 105.64 KB

Compass 3.12.1 for Galileo, Callisto, RMServer, and CAL

Released July 10, 2017
For OS X 10.11 (El Capitan) and 10.12 (Sierra) – Windows 8.1 Professional and Windows 10
Firmware files for Galileo, Callisto, RMServer, and CAL are included with the Compass 3 software.
After installing the software, firmware files can be found within the Compass 3 application folder on your computer.

MAC OS X

Compass 3.12.1 Mac OS X

2. 下载 MAPP 软件，连接 <https://meyersound.com/product/mapp-xt/#software>

A. 使用之前注册的账号进行登录下载

Meyer Sound

MAPP XT
System Design Tool

OVERVIEW RELEASE NOTES REGISTER ACCOUNT SOFTWARE SUPPORT VIDEOS RESOURCES

MAPP XT Software

CURRENT VERSION 1.2.0-18573
Download MAPP XT 1.2.0-18573 for Windows 8.1 and 10
Download MAPP XT 1.2.0-18573 for macOS 10.12.6 and 10.13.x
macOS may require an installation of Java: Install Java for macOS

PREVIOUS VERSION 1.1.6-18341
Download MAPP XT 1.1.6-18341 for Windows 8.1 and 10
Download MAPP XT 1.1.6-18341 for macOS 10.10.5 and 10.11.x

Please note:
Your MAPP XT credentials are different than your meyersound.com credentials.

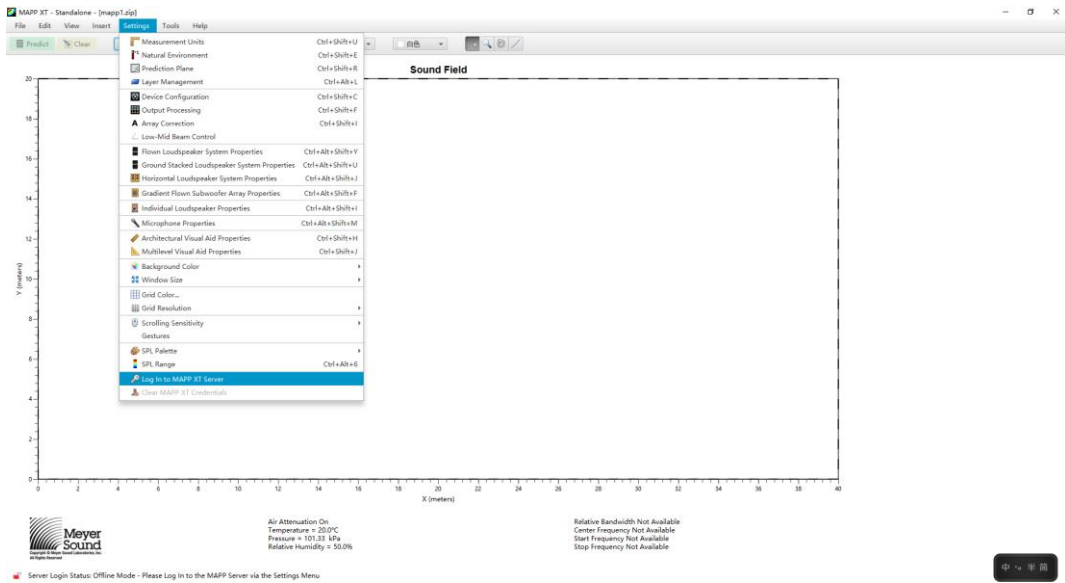
CONTACT
2832 San Pablo Ave, Berkeley, CA 94702
+1 510.486.1166

Copyright © 1979-2018 Meyer Sound Laboratories, Inc.

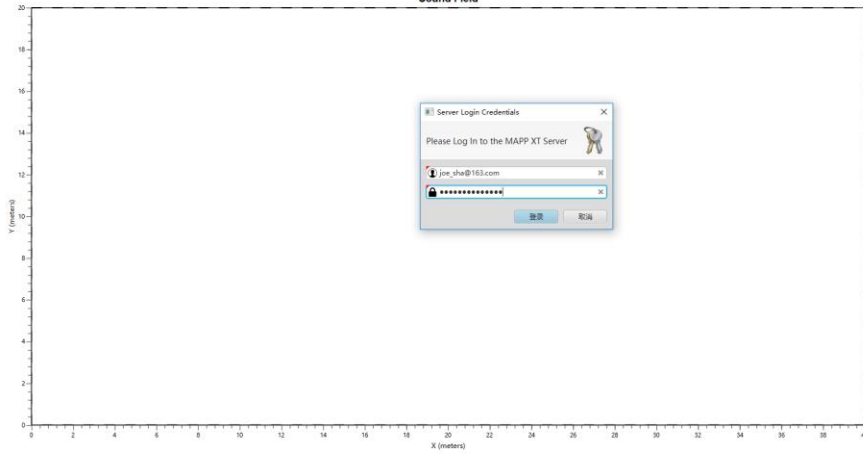
B. 下载完成后，在“REGISTER”标签页，进行 MAPP 账号注册

注册完成后在邮箱内收到确认信息，完成 MAPP 账号注册。

- C. 安装完成 MAPP 软件后，打开软件进入界面，在 Settings 标签页内，倒数第二行打开 Log In to MAPP XT Server，输入之前注册的 MAPP 账号登录到软件服务器，即可使用。



Sound Field



Server Login: Credentials

Please Log In to the MAPP XT Server

Username:

Password:



Air Attenuation On
Temperature = 20.0°C
Pressure = 101.93 kPa
Relative Humidity = 50.0%

Relative Bandwidth Not Available
Center Frequency Not Available
Start Frequency Not Available
Stop Frequency Not Available

Server Login Status: Offline Mode - Please Log In to the MAPP Server via the Settings Menu

中 / 中文